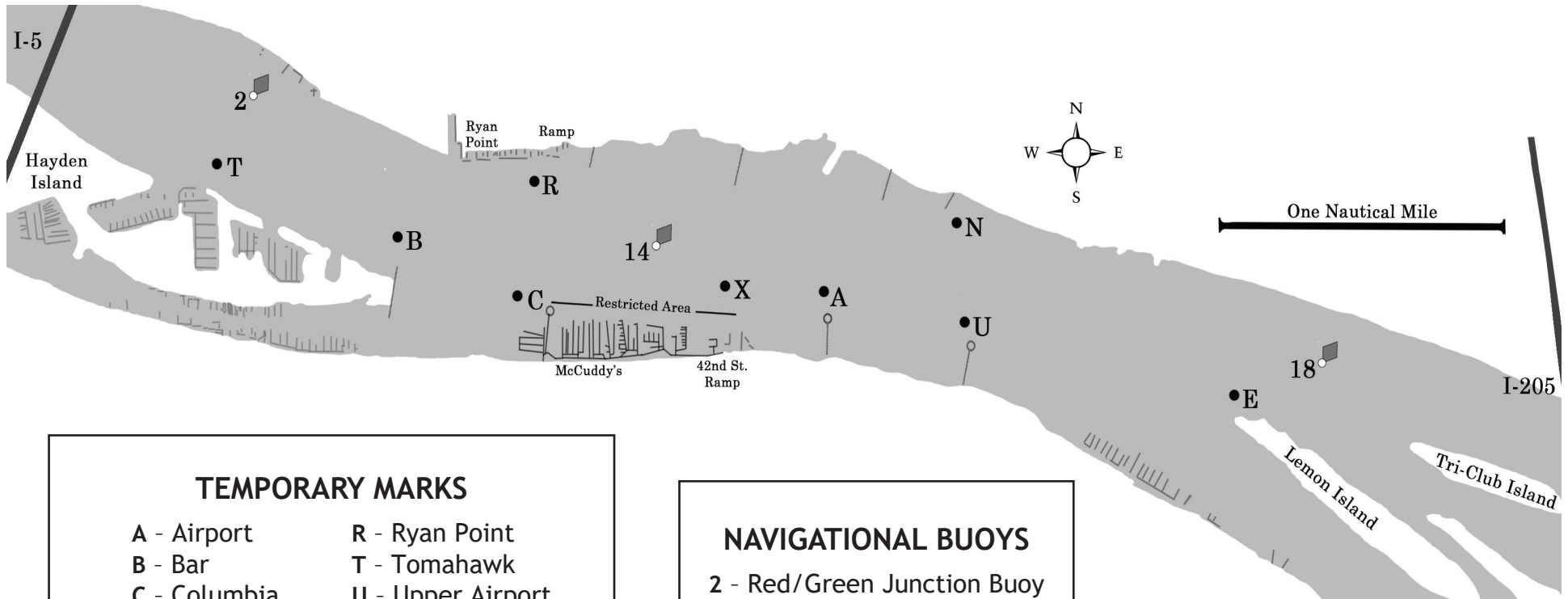


OCSA Designated Mark Chart



TEMPORARY MARKS	
A - Airport	R - Ryan Point
B - Bar	T - Tomahawk
C - Columbia	U - Upper Airport
E - East River	X - Sextant
N - North River	

NAVIGATIONAL BUOYS
2 - Red/Green Junction Buoy
14 - Red Buoy "14"
18 - Red Buoy "18"

The chart describes the marks on the river and approximate location as designated by OCSA. The Race Committee may or may not use all of these marks. Courses will be displayed on the committee boat by listing a Course Description for each class. Each Course Description shall be constructed in accordance with the OCSA General Sailing Instructions in the Racebook.

Do not cross the finish line during the race unless you are: (a) finishing the race, or (b) rounding the mark end of the finishing line when such a rounding is required by the course for your class.

The information contained on this page is intended to clarify and not alter the OCSA General Sailing Instructions in the OCSA Racebook

OCSA Windward Leeward Alphabetic Courses

- 1 - WINDWARD ROUNDING MARK:**
Temporary Yellow/Orange Inflatable Mark or OCSA designated Navigation Buoy “2”
- 2 - GYBE MARK:**
Temporary Yellow/Orange Inflatable Mark
- 3 - SHORT COURSE LEEWARD ROUNDING MARK:**
Temporary Yellow/Orange Inflatable Mark
- 4 - LONG COURSE LEEWARD ROUNDING MARK:**
Temporary Yellow/Orange Inflatable Mark
- 5 - LEEWARD ROUNDING MARK:**
Temp. Yellow/Orange Inflatable Mark
Approximately 50 yards to weather of the Race Committee Boat
- S - STARTING MARK:**
Temporary Green Inflatable Mark
- F - FINISHING MARK:**
Temporary Orange Inflatable Mark or OCSA designated Navigation Buoy “14”

The diagram shows the marks of the course. The Race Committee may or may not use all of these marks. The order in which marks are to be passed is determined by the courses listed on the Alphabetic Table of Courses. A red square when displayed at the top of the course board signals that OCSA Designated Mark “2” shall serve as Mark 1. These courses are to be sailed with all marks left to port. Courses will be displayed on the committee boat by listing the class followed by

ALPHABETIC TABLE OF COURSES			
Leeward (Downwind) Finish Courses		Windward (Upwind) Finish Courses	
A	Start-1-Finish	Q	Start-1-2-5-1-3-Finish
AA	Start-1-2-Finish	QQ	Start-1-2-5-1-4-Finish
B	Start -1-5-1-Finish	S	Start-1-3-1-5-1-3-Finish
BB	Start-1-5-1-5-1-Finish	SS	Start-1-4-1-5-1-4-Finish
C	Start-1-2-5-1-Finish	T	Start-1-3-Finish
CC	Start-1-2-5-1-2-5-1-Finish	TT	Start-1-3-1-3-Finish
D	Start-1-3-1-Finish	V	Start-1-4-1-3-Finish
DD	Start-1-3-1-3-1-Finish	W	Start-1-4-Finish
F	Start-1-4-1-Finish	WW	Start-1-4-1-4-Finish
FF	Start-1-4-1-4-1-Finish	X	Start-1-5-1-3-Finish
H	Start-1-3-1-5-1-Finish	XX	Start-1-5-1-4-Finish
HH	Start-1-4-1-5-1-Finish		

Revised 2017

the letter(s) from the Alphabetic Table of Courses. The start and finish lines may be on either side of the committee boat. The finish line is restricted. Do not cross the finish line during the race unless you are finishing the race. This information is intended to clarify and is not intended to alter the OCSA General Sailing Instructions.

