


# OCSA Race Management Clinic



Gregg Bryden  
SYSCO Commodore

# Agenda OCSA

## Race Management Clinic

- ▶ RC under COVID
  - ▶ Governing rules – World Sailing, OCSA General SIs, Notice Board SSIs.
  - ▶ What's New in RRS 2021–24
  - ▶ Prepping for the Races
  - ▶ Equipment
  - ▶ Radio Communications
  - ▶ Setting Up for the Race
  - ▶ Figure out the Courses
  - ▶ Checking in Boats
  - ▶ The Starts
  - ▶ The Races
  - ▶ Finishing Boats.
- 

# OCSA COVID-19 Special Regulations:

Race only if you can do so safely per current COVID guidance (<https://sharedsystems.dhsoha.state.or.us/DHSForms/Served/le2342E.pdf>). ...

- 1) Competitors and support persons shall comply with any reasonable request from an event official. Failure to comply may be misconduct.
- 2) Reasonable actions by event officials to implement COVID-19 guidance, protocols or legislation, even if they later prove to have been unnecessary, are not improper actions or omissions.
- 3) Rule 40.1 shall apply. Rule 40.1 states, “ ... *each competitor shall wear a personal flotation device* except briefly while changing or adjusting clothing or personal equipment. Wet suits and dry suits are not personal flotation devices.”
- 4) *Each competitor shall wear a face covering or mask suitable for the reduction in transmission of COVID-19.*

5) The following competitor limits shall apply:

<b>LOA</b>	<b>Maximum Competitors</b>
20' and less	2
Greater than 20' to less than or equal to 27'	3
Greater than 27' to less than or equal to 33'	4
Greater than 33'	5

The Race Committee will score a boat that violates numbers 1, 3, 4, or 5 of this amendment as DSQ, without a hearing.

OCSA Presents:  
**Dave Perry**  
A Webinar on  
**The Racing Rules of Sailing**  
What the Changes Are in the 2021-2024 Rules  
**March 13, 2021**



*Dave Perry is well known for his enthusiastic and engaging teaching style for sailors of all ages. Highly respected for his deep knowledge of the sport of Sailing, particularly rules and tactics in fleet, team and match racing, Dave has extensive experience coaching sailors from Optis through the US Olympic Sailing Team. He is one of the sport's leading rules experts, serving on the US Sailing Appeals Committee, and as Rules Advisor for several recent America's Cup teams and the US Sailing Team at the 2008, 2012 and the upcoming Tokyo Olympic Games in 2021.*

Dave's knowledge base, fun style, and openness to answering questions has ensured that he always draws a crowd in Portland. He has recently perfected how to bring his same engaging and effective teaching style to the Zoom platform, and is **coming to us on Zoom on Saturday, March 13.**

**Session A**

**9:30-11:30** - Dave Perry explains the changes in the 2021-2024 Racing Rules of Sailing racers need to know, and answers the sailors' questions on **all** the rules for the upwind legs. **12:30-2:30** - Dave Perry answers the sailors' questions on **all** the rules for the downwind legs, mark roundings and starts.

**Session B** (for Race Officers and Judges)

**3:30-5:30** - Dave Perry explains the changes in the 2021-2024 Racing Rules of Sailing race officials need to know, and answers the race officials' questions.

*Watch for an e-Blast in January for sign-up and pricing information.*

**GENERAL QUESTIONS:**

Nicole Sirois,  
OCSA Education Officer  
education@sailocsa.org

**SESSION B QUESTIONS:**

Craig Daniels, Nat'l Judge,  
Registered Umpire/Race Officer  
protest@sailocsa.org

This is  
NEW

### Abandonment Signals



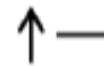
**N** All races that have started are *abandoned*. Return to the starting area. The warning signal will be made 1 minute after removal unless at that time the race is *abandoned* again or *postponed*.



**N over H**  
All races are *abandoned*. Further signals ashore.



**N over A** All races are *abandoned*. No more racing today.



**V** Monitor communication channel for safety instructions (see rule 37).

### Safety

On Pancho

This is  
NEW

## Other Signals



**L** Ashore: A notice to competitors has been posted.  
Afloat: Come within hail or follow this vessel.

**M** The object displaying this signal replaces a missing *mark*.

**Y** Wear a personal flotation device (see rule 40).

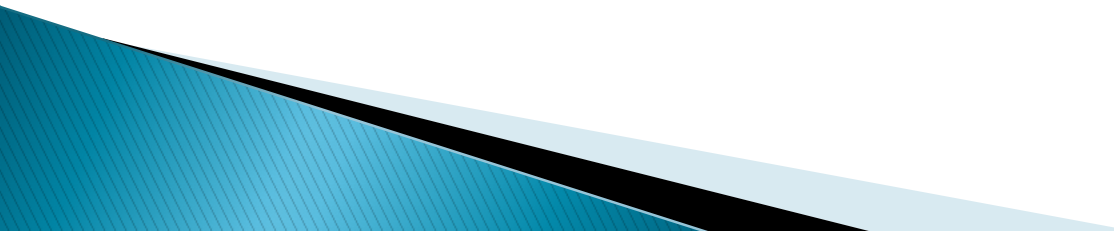
(no sound)

**Orange** flag.  
The staff displaying this flag is one end of the starting line.

(no sound)

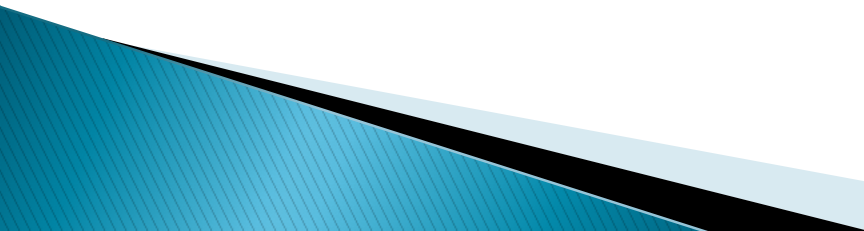
**Blue** flag.  
The staff displaying this flag is one end of the finishing line.

# Prepping for Race Committee

- ▶ Crew
    - One complement on platform boat
    - Two people on Pancho
  - ▶ Weather and wind
    - Sailflow [Roger's Marine](#)
    - [River Stage and Current](#)
  - ▶ [Competitors](#)
  - ▶ [Notice Board](#)
- 



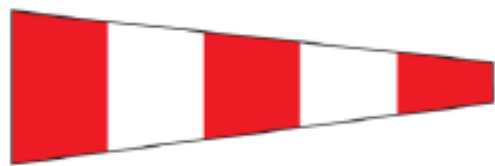
# Equipment

- ▶ **Flags**
    - Minimum COVID Flag Set: RC, Come Within Hail, Start, Individual Recall, Postpone, Second Substitute, Abandon, Finish
  - ▶ **Course Board**
  - ▶ **5 Marks**
  - ▶ **Paperwork – Check in and Finish Sheets**
  - ▶ **Auto-horn**
  - ▶ **Air horn**
  - ▶ **Radios**
  - ▶ **Safety stuff: Life jackets, flairs, etc.**
- 

# RACE SIGNALS

The meanings of visual and sound signals are stated below. An arrow pointing up or down ( $\uparrow \downarrow$ ) means that a visual signal is displayed or removed. A dot ( $\bullet$ ) means a sound; five short dashes ( $- - - - -$ ) mean repetitive sounds; a long dash ( $-$ ) means a long sound. When a visual signal is displayed over a class flag, fleet flag, event flag or race area flag, the signal applies only to that class, fleet, event or race area.

## Postponement Signals



**AP** Races not started are *postponed*. The warning signal will be made 1 minute after removal unless at that time the race is *postponed* again or *abandoned*.



**AP over H** Races not started are *postponed*. Further signals ashore.



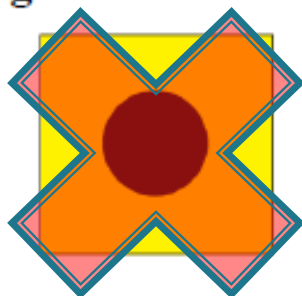
**AP over A** Races not started are *postponed*. No more racing today.

## Preparatory Signals



↑● ↓—

**P** Preparatory signal.



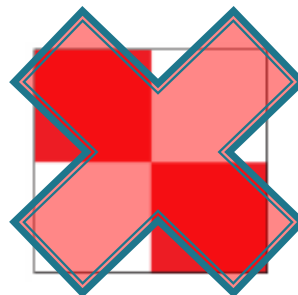
↑● ↓—

**I** Rule 30.1 is in effect.



↑● ↓—

**Z** Rule 30.2 is in effect.



↑● ↓—

**U** Rule 30.3 is in effect.



↑● ↓—

**Black flag.** Rule 30.4 is in effect.

## Recall Signals



↑●

**X** Individual recall.

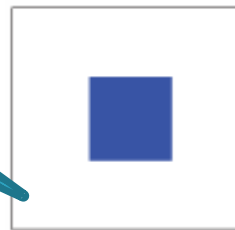


↑●● ↓●

**First Substitute** General recall. The warning signal will be made 1 minute after removal.

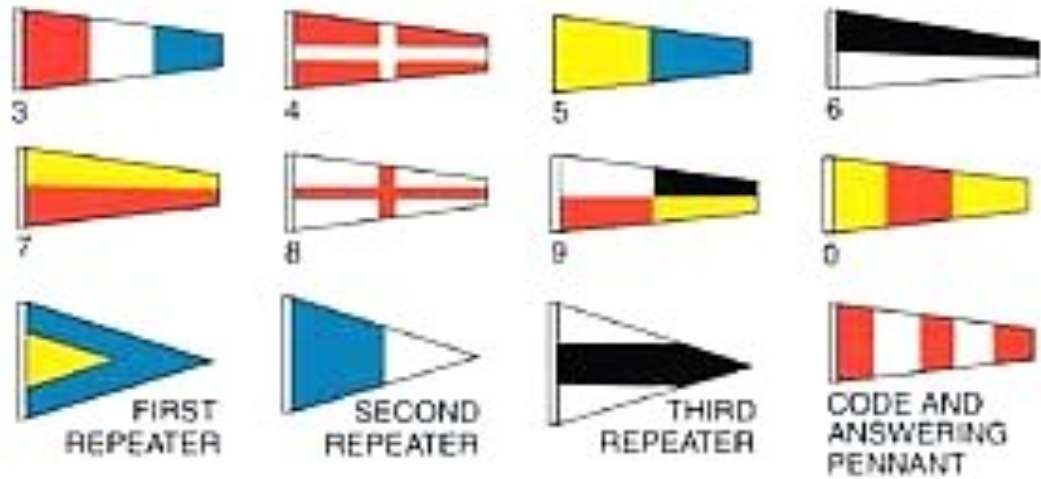
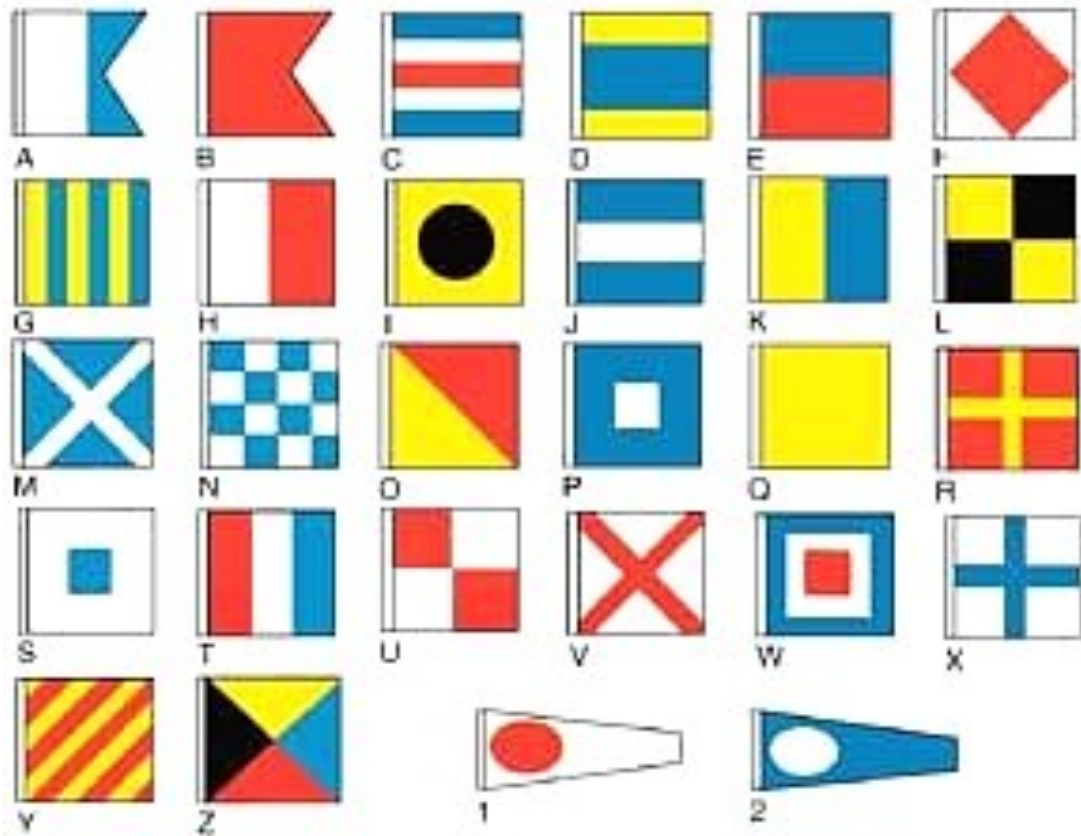
On Pancho

## Shortened Course



↑●●

**S** The course has been shortened. Rule 32.2 is in effect.



# Radio Communications

- ▶ Radios
  - Communicate with fleets and Mark Boat on 72
  - Dual watch on 16 if possible
  - Communicate with Barges on 13
- ▶ All Oral/Signal Races may be allowed due to COVID

# Setting Up

- ▶ Rendezvous at least an hour ahead of first gun
- ▶ Figure out the courses based on wind and current and daylight
  - Set wide start line, narrower finish line perpendicular to wind (skew slightly to favor pin)
  - Setting marks
  - Don't always use red/green "2" for windward mark 1
  - Red square on Course Board = Buoy "2" is Mark 1
  - Consider setting 2 mark for cruisers
  - I Love the 5 turning mark!
  - Notes on what fleets want will be on SYSCO check in sheets.
  - Combining starts.
- ▶ Fill in all information on the finish sheet header

# Finish Sheet

**EVENT:** \_\_\_\_\_

**DATE:** \_\_\_\_\_

**RACE # :** \_\_\_\_\_

		Start Time		Race Committee Member Names
count	Start	HH:MM	Course	
	First Start			
	Second Start			
	Third Start			
	Fourth Start			
	Fifth Start			

		Finish Time				Finish Time	
POS	Sail Number	HH:MM:SS	Notes	POS	Sail Number	HH:MM:SS	Notes
1				31			
2				32			
3				33			
4				34			
5				35			

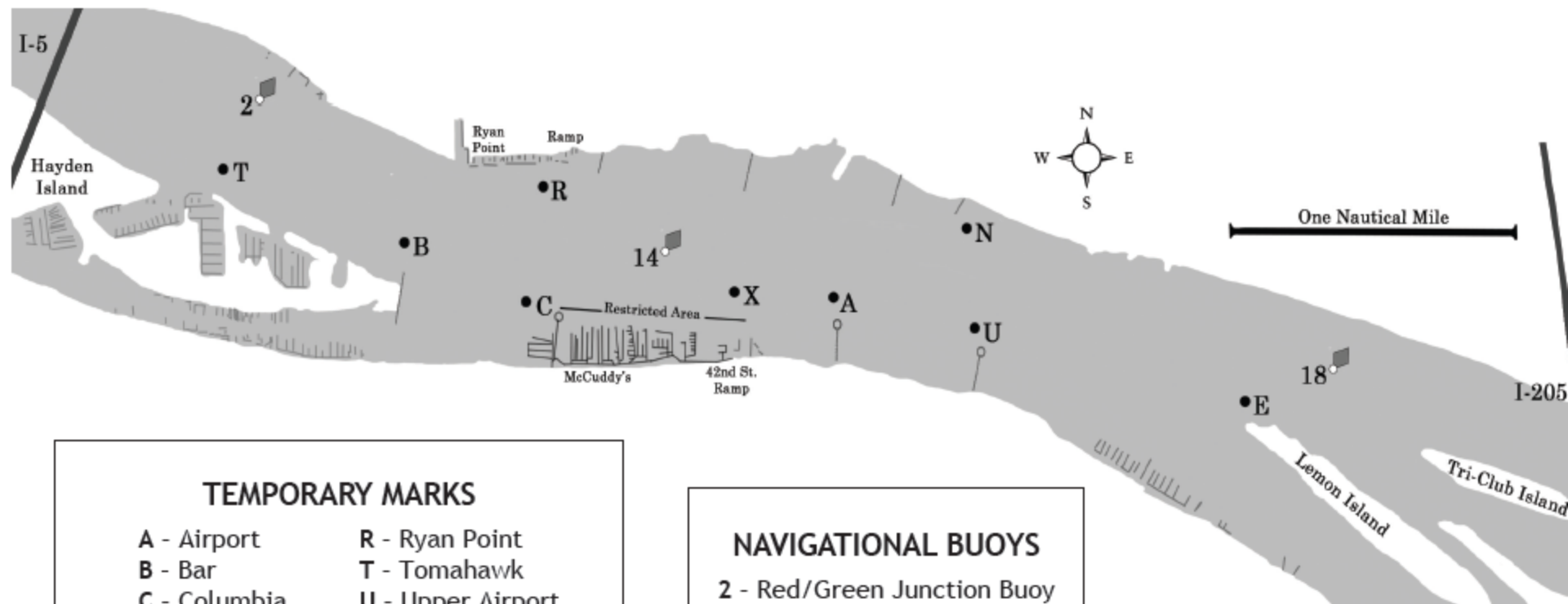
# Intermission



*A Sailboat In The Moonlight By Billie Holiday*



# OCSA Designated Mark Chart



## TEMPORARY MARKS

- |                 |                   |
|-----------------|-------------------|
| A - Airport     | R - Ryan Point    |
| B - Bar         | T - Tomahawk      |
| C - Columbia    | U - Upper Airport |
| E - East River  | X - Sextant       |
| N - North River |                   |

## NAVIGATIONAL BUOYS

- 2 - Red/Green Junction Buoy
- 14 - Red Buoy "14"
- 18 - Red Buoy "18"

The chart describes the marks on the river and approximate location as designated by OCSA. The Race Committee may or may not use all of these marks. Courses will be displayed on the committee boat by listing a Course Description for each class. Each Course Description shall be constructed in accordance with the OCSA General Sailing Instructions in the Racebook.

Do not cross the finish line during the race unless you are: (a) finishing the race, or (b) rounding the mark end of the finishing line when such a rounding is required by the course for your class.

**The information contained on this page is intended to clarify and not alter the OCSA General Sailing Instructions in the OCSA Racebook**

# OCSA Windward Leeward Alphabetic Courses

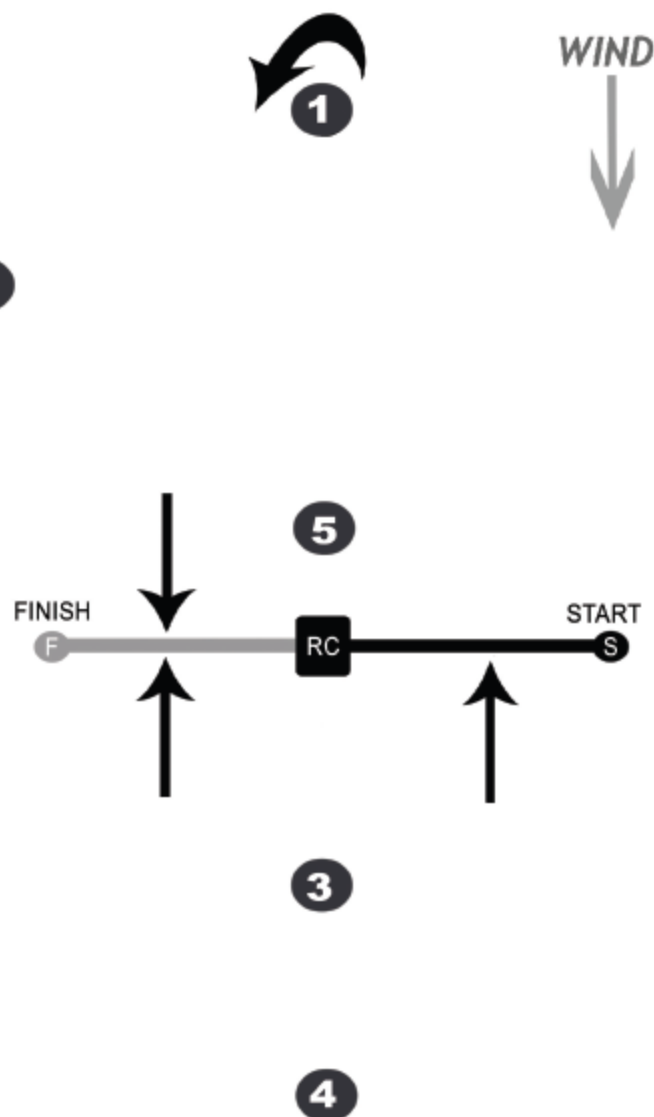
- 1 - **WINDWARD ROUNDING MARK:**  
Temporary Yellow/Orange Inflatable Mark or OCSA designated Navigation Buoy "2"
- 2 - **GYBE MARK:**  
Temporary Yellow/Orange Inflatable Mark
- 3 - **SHORT COURSE LEEWARD ROUNDING MARK:**  
Temporary Yellow/Orange Inflatable Mark
- 4 - **LONG COURSE LEEWARD ROUNDING MARK:**  
Temporary Yellow/Orange Inflatable Mark
- 5 - **LEEWARD ROUNDING MARK:**  
Temp. Yellow/Orange Inflatable Mark  
Approximately 50 yards to weather of the Race Committee Boat
- S - **STARTING MARK:**  
Temporary Green Inflatable Mark
- F - **FINISHING MARK:**  
Temporary Orange Inflatable Mark or OCSA designated Navigation Buoy "14"

The diagram shows the marks of the course. The Race Committee may or may not use all of these marks. However, mark 4 will not be used unless mark 3 is also set. The order in which the marks are to be passed is determined by the courses listed on the Alphabetic Table of Courses. A red square when displayed at the top of the course board signals that OCSA Designated Mark "2" shall serve as Mark 1. These courses are to be sailed with all marks left to port. Courses will be displayed on the committee boat by listing the class

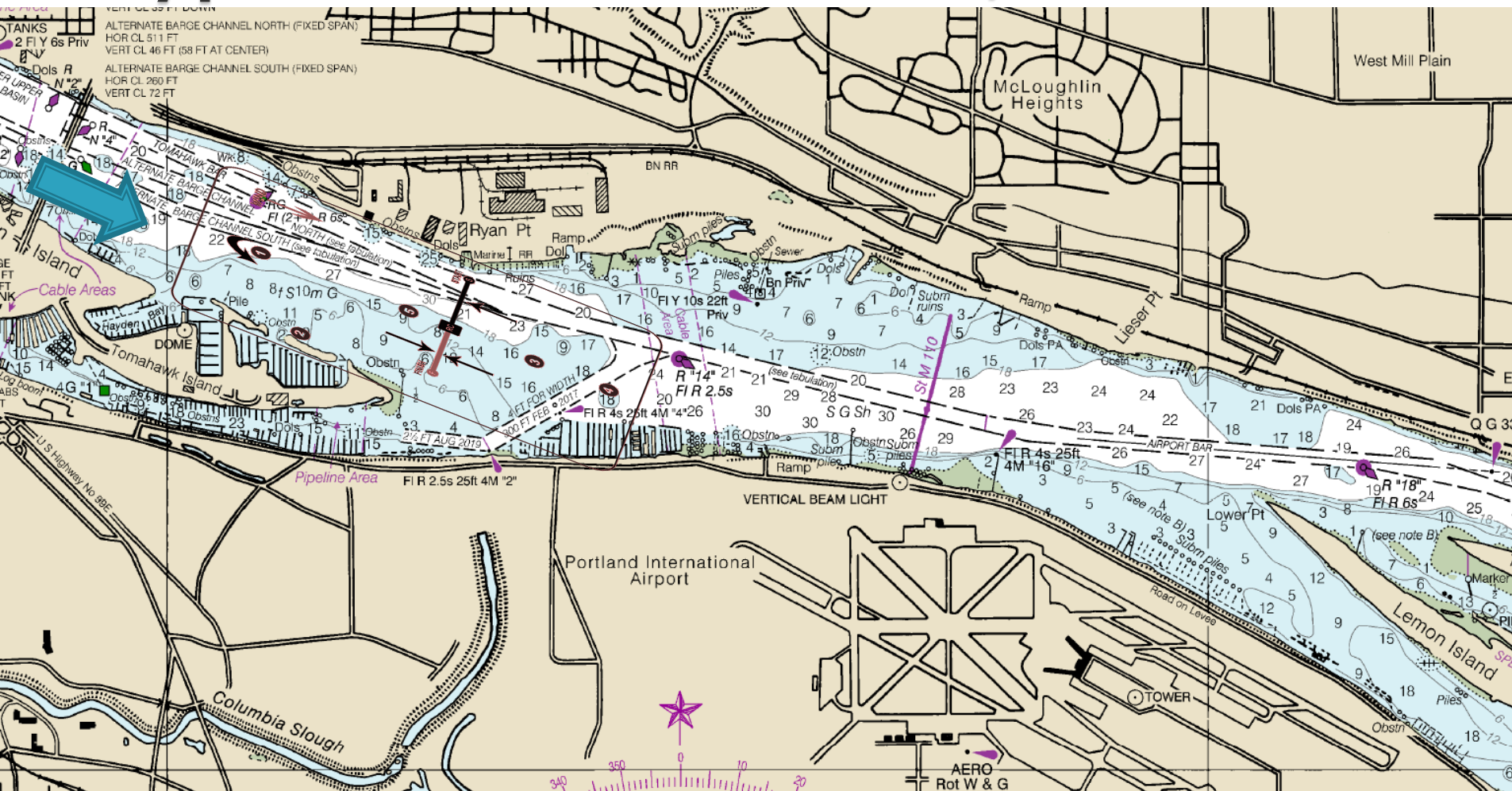
## ALPHABETIC TABLE OF COURSES

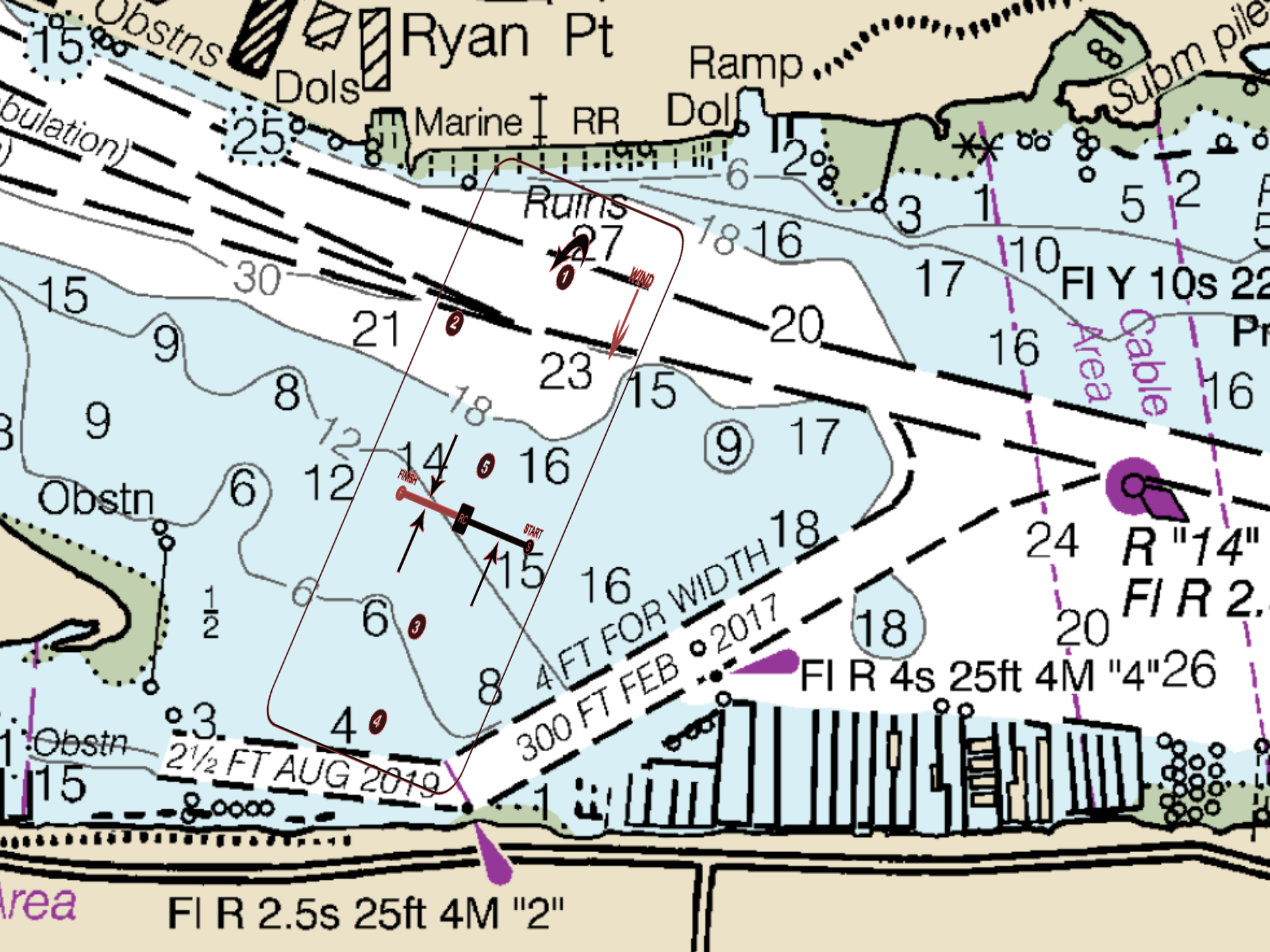
Leeward (Downwind) Finish Courses		Windward (Upwind) Finish Courses	
A	Start-1-Finish	Q	Start-1-2-5-1-3-Finish
AA	Start-1-2-Finish	QQ	Start-1-2-5-1-4-Finish
B	Start -1-5-1-Finish	S	Start-1-3-1-5-1-3-Finish
BB	Start-1-5-1-5-1-Finish	SS	Start-1-4-1-5-1-4-Finish
C	Start-1-2-5-1-Finish	T	Start-1-3-Finish
CC	Start-1-2-5-1-2-5-1-Finish	TT	Start-1-3-1-3-Finish
D	Start-1-3-1-Finish	V	Start-1-4-1-3-Finish
DD	Start-1-3-1-3-1-Finish	W	Start-1-4-Finish
F	Start-1-4-1-Finish	WW	Start-1-4-1-4-Finish
FF	Start-1-4-1-4-1-Finish	X	Start-1-5-1-3-Finish
H	Start-1-3-1-5-1-Finish	XX	Start-1-5-1-4-Finish
HH	Start-1-4-1-5-1-Finish	Z	Start-1-2-3-Finish
Revised 2020		ZZ	Start-1-2-3-1-3-Finish

followed by the letter(s) from the Alphabetic Table of Courses. The start and finish lines may be on either side of the committee boat. The finish line is restricted. Do not cross the finish line during the race unless you are finishing the race. This information is intended to clarify and is not intended to alter the OCSA General Sailing Instructions.



# Typical SW Windward / Leeward





Ryan Pt

Ramp

Marine RR

Ruins

FI Y 10s 22

Pr

R "14"

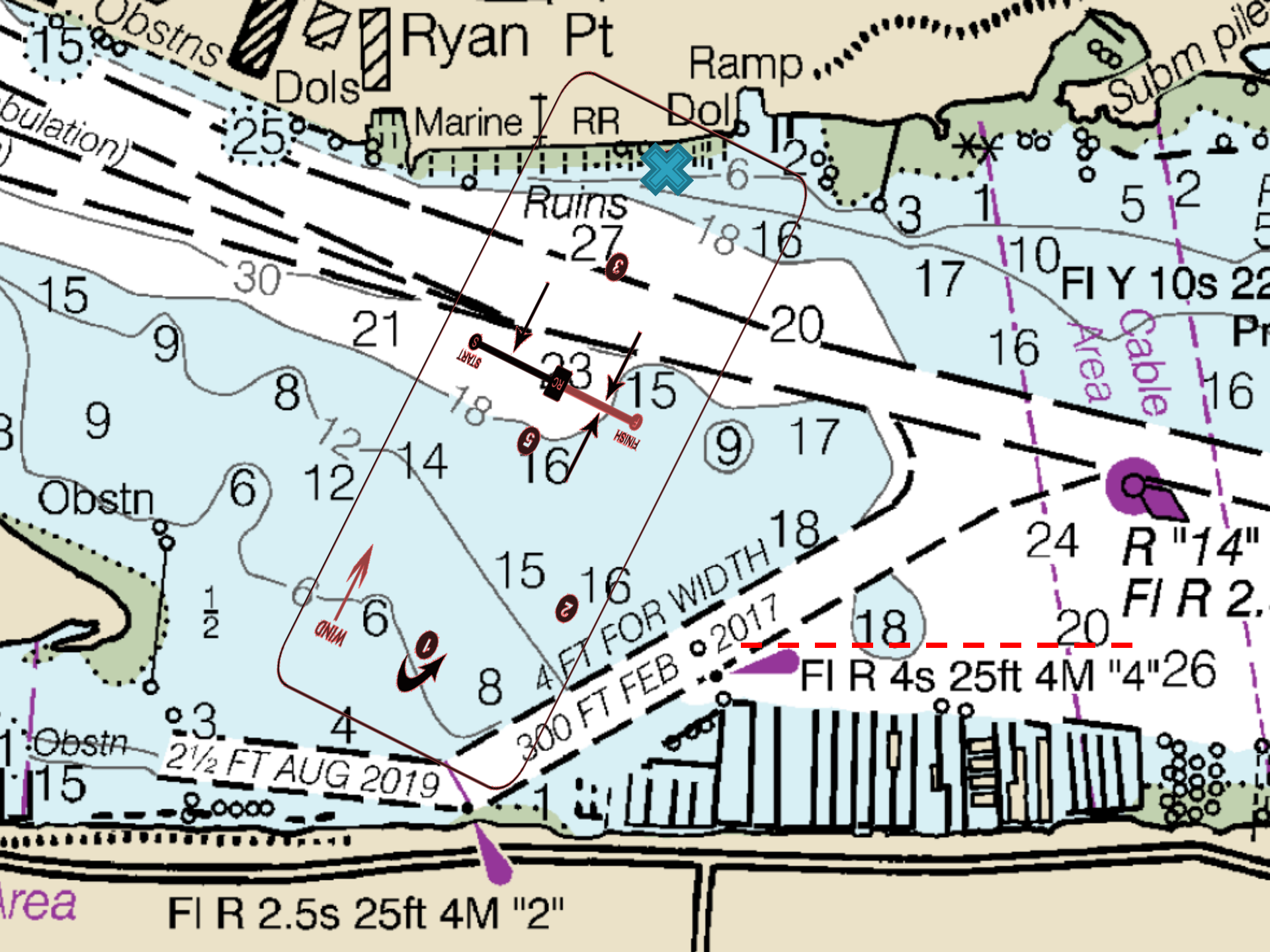
FI R 2.

FI R 4s 25ft 4M "4" 26

2 1/2 FT AUG 2019

4 FT FOR WIDTH  
300 FT FEB 2017

FI R 2.5s 25ft 4M "2"



Ryan Pt

Ramp

Subm pile

Obstns

Dols

Marine

RR

Dol

(bulation)

Ruins

FI Y 10s 22

Cable Area

R "14"  
FI R 2.

FI R 4s 25ft 4M "4"26

2 1/2 FT AUG 2019

4 FT FOR WIDTH 2017

Area

FI R 2.5s 25ft 4M "2"

# Check In Sheet

Check-in Sheet

Thursday SYSCO Summer Fun

Date: July 2, 2020  
 Recorder: Amy Hopper - Free Bowl of soup

Pennant No. 1	Class: J 24	Sail#	Check in	Recorder Started	Notes
Rush	J24	161			
White Trash	J24	620			
One More	J24	683			
Strange Brew	J24	2197			
Joss	J24	2950	✓	✓	
Deadbeat	J24	4124			
<b>Pennant No. 2</b>			<b>Class: Cal 20</b>		
			Count:		
Pretzel Logic	Cal 20	17	✓	✓	
Scooter	Cal 20	78	✓	✓	
Yacht Knot	Cal 20	549			
Gwaihir	Cal 20	638	✓	✓	
Coho	Cal 20	967	✓	✓	
River Rose	Cal 20	1000			
TILT	Cal-20	1378	✓	✓	
Local Motion	Cal 20	1576	✓	✓	
For My Girls	Cal 20	1578	✓	✓	
Flounder	Cal 20	1727			
<b>Pennant No. 3</b>			<b>Class: R 20 + V 21</b>		
			Count:		
R2	Ranger 20	2	✓	✓	
Thunder Pig	Ranger 20	117			
Flying Frog	Ranger 20	145	✓	✓	
Pumpkin Seed	Ranger 20	186	✓	✓	
Papagayo	Ranger 20	210	✓	✓	

# The Starts

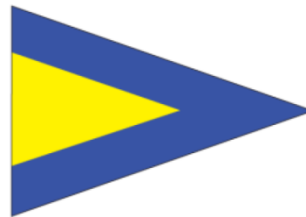
- Auto-horn
- Signal Flags

- Individual Recalls



**X** Individual recall.

- Recall all



**First Substitute** General recall.

# Rolling Flag Sequence

- ▶ **Time**      **Actions**
- ▶ **-1**      Use GPS time to start Auto Horn one minute before first Gun- Attention Signal, lower Come within Hail.
- ▶ **0**      First Long Blast Hoist No. 1.
- ▶ **+1**      Second Long Blast, Hoist Prep Flag.
- ▶ **+4**      Third Long Blast Lower Prep Flag.
- ▶ **+5**      Fourth Long Blast Lower No. 1 and Raise No. 2.
- ▶ Repeat for all starts
- ▶ Turn off Auto Horn after last start.

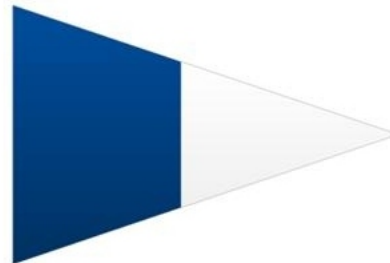


# During the Races

- ▶ Pancho as safety boat
- ▶ Barges
- ▶ Shorten course
- ▶ Time Limits
  - Two hours no one finishes – Abandon
  - 30 Minutes after first finish, unfinished boats are TLE (45 minutes for High PHRF)
- ▶ No such thing as finish in place, but “Sunshine” rule if second race.

# Finishing Boats

- ▶ Use the finish sheets-- not check-in sheets!
- ▶ Record sail numbers and times (preferably military time)
- ▶ The pattern for the Recorder: Spotter calls out sail number. Timer calls out hours and minutes, Spotter calls the “over”, then timer calls out seconds.
- ▶ Second Races? Yes if time and desired by fleet. Reset Course Board for fleets’ second races.
- ▶ Fly Second Substitute flag to indicate additional race(s).



EVENT: SYSCO Twilight Twilight 2020

DATE: July 16 2020

RACE #: 1

		Start Time		Race Committee Member Names			
count	Start	HH:MM	Course				
	First Start	18:35	TT	Michael Morrissey			
	Second Start	18:40	T	Patricia Morinley			
	Third Start	18:45	T	Bruce Newton			
	Fourth Start	18:50	T	Jim			
	Fifth Start	18:55	2-14-finish				
	6th Start	19:00	2-14-finish				
		Finish Time		Finish Time			
POS	Sail Number	HH:MM:SS	Notes	POS	Sail Number	HH:MM:SS	Notes
1	78	19:22:10		31	28	19:50:30	
2	638	19:23:07		32	45	19:50:54	
3	967	19:23:42		33	4124	19:51:02	
4	1578	19:24:25		34	2197	19:51:04	
5	1000	19:24:35		35	270	19:52:30	
6	1576	19:24:54		36	2950	19:53:13	
7	549	19:25:15		37	371	19:53:26	
8	17	19:26:15		38	44	19:53:38	
9	1378	19:27:07		39	M-26	19:54:00	
10	425	19:29:49		40	192	19:54:33	
11	4576	19:30:40		41	ESCAPADE	19:56:31	
12	2	19:30:48		42	14461	19:56:47	
13	515	19:31:47		43	916	19:57:35	
14	306	19:31:53		44			
15	145	19:33:18		45			
16	298/240	DNF		46			
17	93	19:34:12		47			
18	186	19:35:18		48			
19	350	19:36:34		49			
20	59631	19:37:50		50			
21	294	19:38:04		51			
22	4215	19:38:08		52			
23	6868	19:38:28		53			
24	73329	19:40:10		54			
25	134	19:40:45		55			
26	59171	19:41:52		56			
27	79164	19:43:16		57			
28	047	19:44:11		58			
29	69345	19:46:37		59			
30	5	19:48:30		60			

# Questions?

